

Voith Electrical Drive System

When range matters!

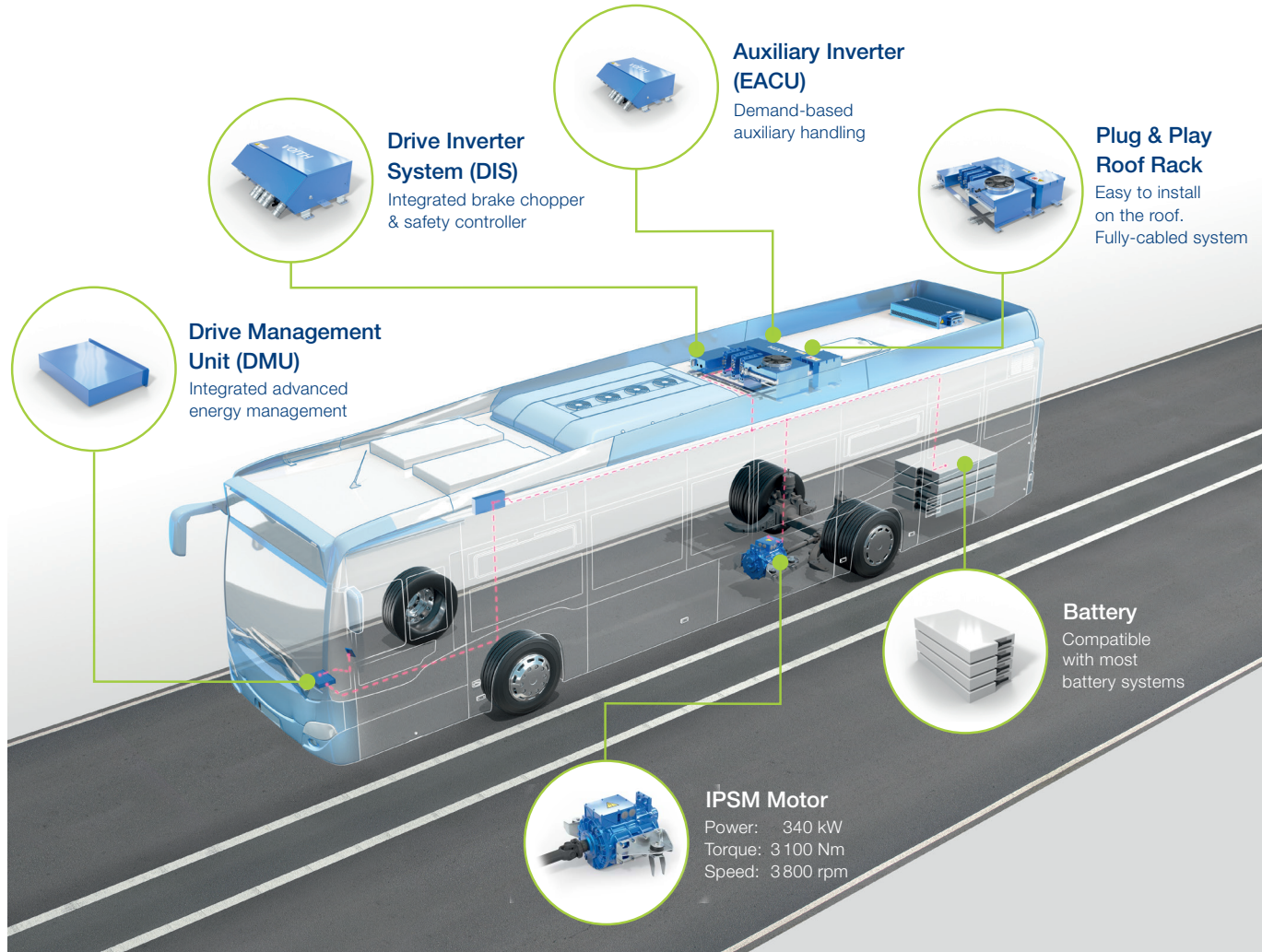
The development of the Voith Electrical Drive System is the newest milestone in technology designed to reliably and efficiently improve your fleet's performance. This innovative and low-weight drive system offers low-energy consumption and enables long-range transport. Additionally, all components are water-cooled and very quiet.

To reduce air and noise emissions in urban areas, operators have started to transform their fleets to electric. Voith is committed to tailored plug-and-play solutions with optimized interfaces that are easy to integrate. The Voith Electrical Drive System is a fully electric drivetrain suitable even for articulated buses and challenging topographies. It represents best-in-class efficiency and reliability. The compact, energy-efficient electric motor ensures further savings in fuel consumption while requiring almost no additional installation space.

Client benefits and advantages

- + High reliability
 - + Efficient, lightweight e-bus drivetrain lowers energy consumption
 - + Complete single-sourced system with perfectly matched components and simple interfaces
 - + Water-cooled components with high recuperation rates, low-noise and compact design
 - + Full need-based control of all auxiliaries
-

Voith Electrical Drive System at a glance



VT2464_en_vwk_2019-10. All data and information without obligation. Subject to change.



Voith Group
25 Winship Road
York, PA 17406

Contact:
Phone +1 717 767 3200
VTI-information@voith.com
www.voith.com



VOITH
Inspiring Technology
for Generations