



One route to rule them all

SPOT™ Route Manager module

Managing your transit agency's routes and service just became incredibly easy with our Route Manager module. A standard component in the SPOT™ ITS back office system, the module delivers a supercharged unity of purpose that connects multiple facets of your operations in an intuitive and straightforward way—saving you time, simplifying planning, and ensuring reliable communication between systems.

What can you do with the SPOT™ Route Manager?

- ▶ Create new routes and detours with drag-and-drop simplicity
- ▶ Plan, edit, and store future service plans with a true version controlled system
- ▶ Assign announcements and playlists at the route, vehicle, and stop levels
- ▶ Create and control geofences for service and announcement triggers
- ▶ Support multilingual announcements
- ▶ Build new block, leg actions, and specify route direction
- ▶ Add new stops, create timetables, and sign codes
- ▶ Import, export, and manage GTFS and GTFS-RT data
- ▶ Schedule and push new plans to connected systems
- ▶ Check asset status to ensure correct plan utilization
- ▶ ... and much, much more!



What drives you?

(800) 382-0917

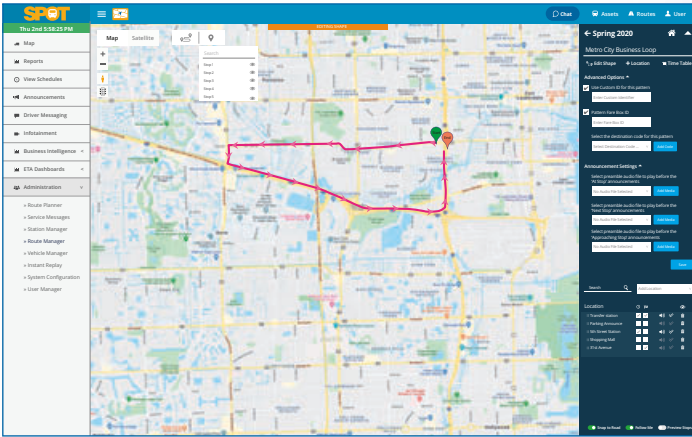
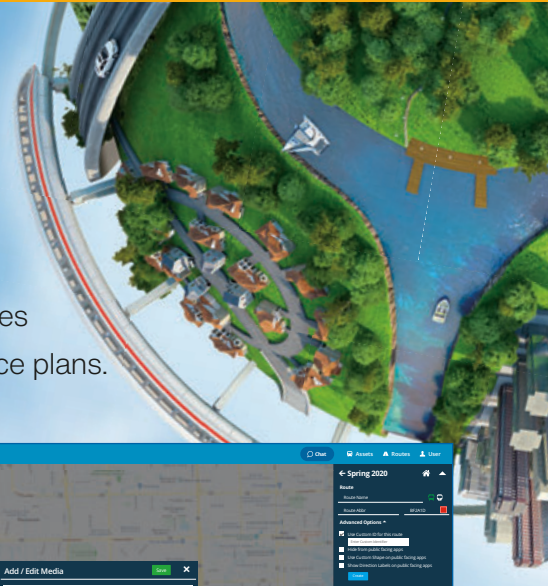
etatransit.com



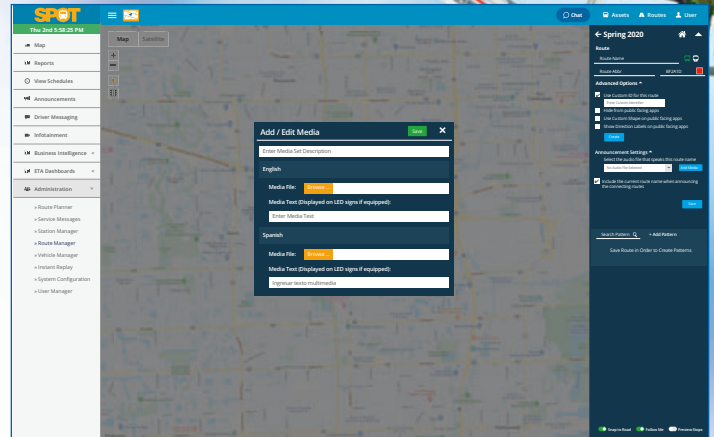
More power & control.

Fine tune your service like never before.

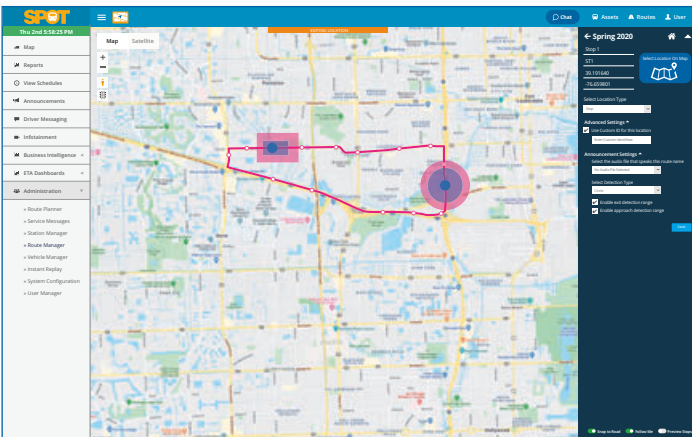
Easily the most powerful resource in your toolbox, the Route Manager provides an incredible amount of customization for creating efficient and reliable service plans.



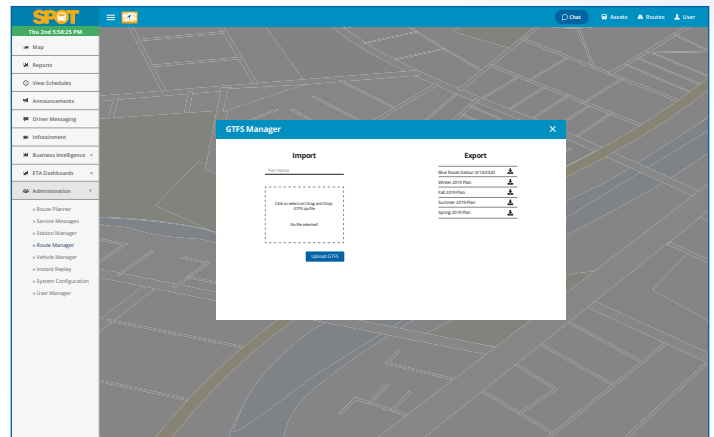
Create new routes with simplicity.



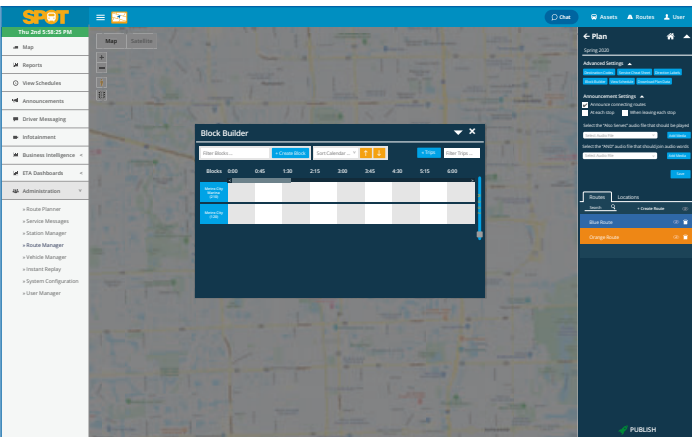
Easily add new media files and corresponding text descriptions.



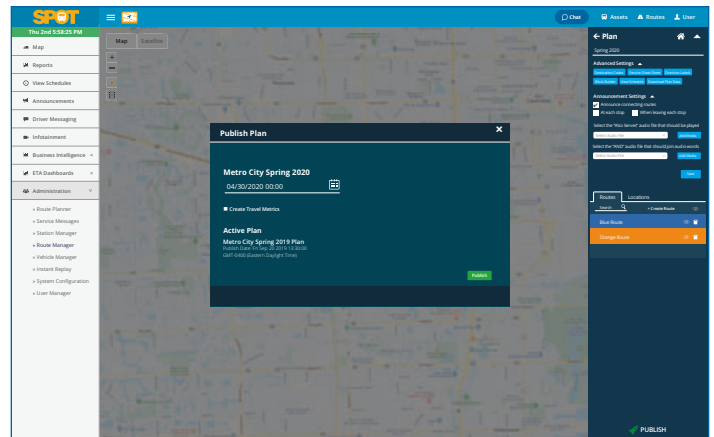
Specify announcement triggers with customizable geofences.



Import your GTFS data, make edits, and export in correct format.



Build new blocks and filter trips.



One-touch plan publishing.