



Driven by accuracy

Automatic passenger counting package

Level up your ridership tallies with ETA Transit's hyper-accurate automatic passenger counting system. Our state-of-the-art hardware delivers real-time data to your back office systems to help with ridership forecasting, route analysis, NTD reporting, and so much more.

The latest features

- ▶ Count passengers without human intervention
- ▶ Identification of passengers versus carry-on items
- ▶ Distinguish between boarding, alighting, and U-turn passengers
- ▶ Real-time, NTD, and historical reports
- ▶ Live video streaming capable

Reliable performance

- ▶ 98% accurate counts
- ▶ Integrated diagnostics reports
- ▶ Secure installation with small footprint
- ▶ Optimized for energy efficiency



What drives you?

(800) 382-0917

etatransit.com



Make your riders count.

Features and specifications

Feature listing

- ▶ **Bi-directional counting on a definable line (polygon)**
 - Variable position of counting lines
 - Adaptation to on-site requirements
- ▶ **Detection of U-turns**
 - No double counting
- ▶ **Door area surveillance**
 - Object detection within a user-defined area
 - Static objects do not disrupt monitoring
- ▶ **Door masking**
 - Automatic compensation for interference from opening doors
- ▶ **Video streaming and recording**
 - Recording of video files to external storage media without user intervention
 - Start and stop function via switching input (door contact)
 - No interference with other counting and monitoring functions
- ▶ **Simple startup and maintenance**
 - Capacity for pre-configuration of up to 8 setups and detection of installation position using jumpers

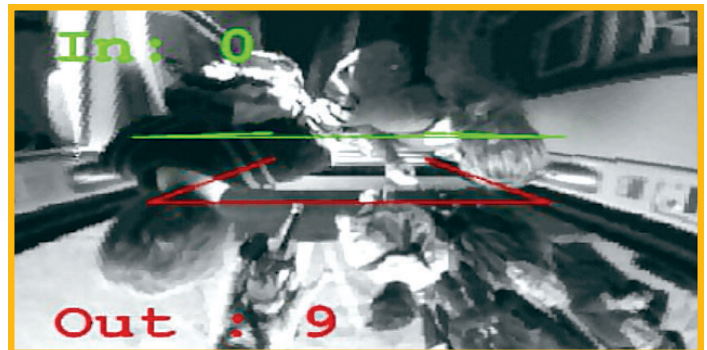


Technical data

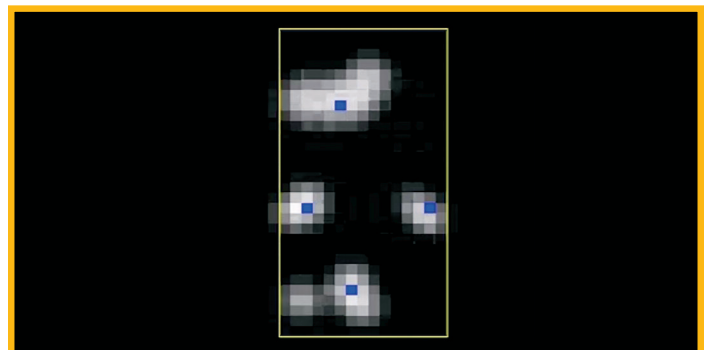
- ▶ Operating nominal voltage 24V DC
- ▶ Operating voltage range 9V-32V DC
- ▶ Power consumption Approx. 4W
- ▶ Operating temperature -25°C to +70°C
- ▶ Storage temperature -40°C to +85°C
- ▶ Degree of protection IP54 (DIN IEC 50629)
- ▶ Monitored area 1.90m to 5.90m depending on installation height
- ▶ Dimensions 141.4 x 71.5 x 31mm
- ▶ Weight Approx. 400g
- ▶ Rail conformity EN 50155
- ▶ EMC EN 55022, in addition E1 for buses and EN 50121-3-2 for rail
- ▶ Reliability MTBF 500.000h

Interfaces

- ▶ Communication M12 Ethernet port
- ▶ Logical protocol IBIS-over-IP (VDV-300), SOA P/XML; IBIS-over-RS485 (similar to VDV-300); Customer specific protocols
- ▶ Inputs / outputs 3 coding jumpers, 1 switching input, 1 output
- ▶ Serial port 2-wire RS485
- ▶ Setup / service Integrated web interface



Live video streaming of passenger boarding and alighting.



Intelligent object identification distinguishes between riders and objects.

